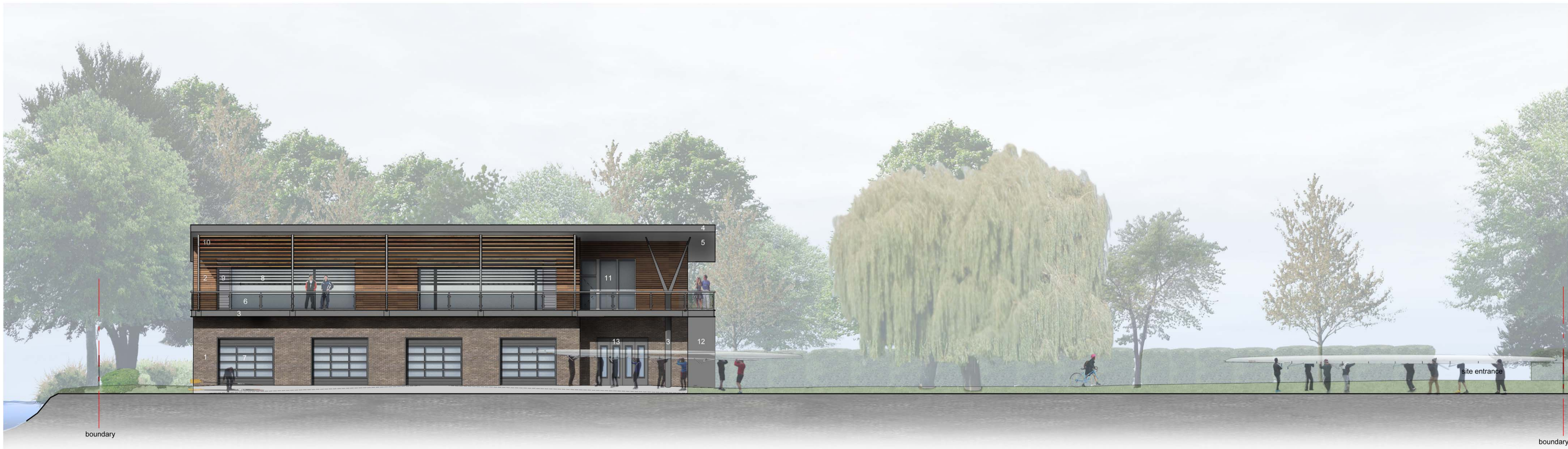


Notes

Materials Schedule

- 1. brown/grey high quality facing bricks
- 2. stained cedar boarding timber cladding
- 3. galvanised steel edge, tie rods and columns
- 4. mid-gray polyester powder coated (PPC) aluminium fascias
- 5. fibre cement board soffit
- 6. galvanised balustrades, glass panels & timber hardwood handrails
- 7. PPC aluminium electrically operated upward opening boat bay doors
- 8. PPC aluminium glazed sliding doors
- 9. timber louver vents
- 10. hardwood louvers supported on galvanised steel rods & columns
- 11. mid-grey PPC aluminium windows
- 12. galvanised stair & ramp open framed
- 13. PPC aluminium sliding folding workshop doors
- 14. translucent panelling
- 15. PPC aluminium louvers
- 16. PPC aluminium doors
- 17. PPC aluminium dark-gray coping trim
- 18. aluminium standing seam roofing incorporating rooflights
- 19. two-way flood vent flaps
- 20. PPC aluminium glazed door



south elevation



north elevation

Rev	Date	notes	Drawn	Chkd
02	2014.06.02	west elevation balcony omitted	BG	RC
01	2014.03.18		BG	RC

r h partnership architects
 94 Chesterton Road Cambridge CB4 1ER
 T 01223 316309 F 01223 324152
 www.rhpartnership.co.uk
 cambridge@rhpartnership.co.uk

Project
Combined Colleges Boathouse
 Logan's Way, Cambridge
 CB4 1BL

Drawing
Proposed Elevations
 South & North

Project Ref	Draw No	Revision
CLO	2111	02
Scale(s)	Size	Drawn
1:125 @ A1	1:250 @ A3	A1
		BG
		RC

Status
Planning

